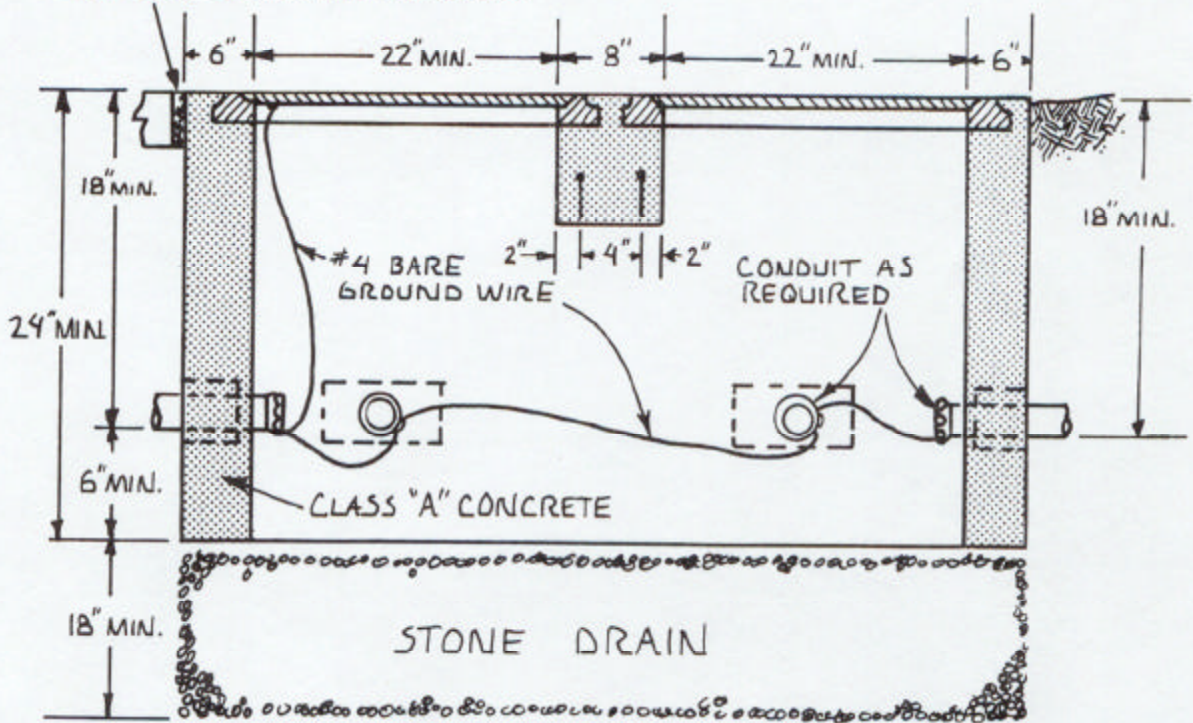


1/2" PRE-MOULDED BITUMINOUS JOINT WHEN LOCATED IN SIDEWALK.



TYPE III JUNCTION BOX

- "TRAFFIC" TO BE EMBOSSED ON COVERS OF JUNCTION BOXES
- LEAVE APPROX. 6' OF SLACK FOR EACH CABLE

BOX, COMPLETE 3060#